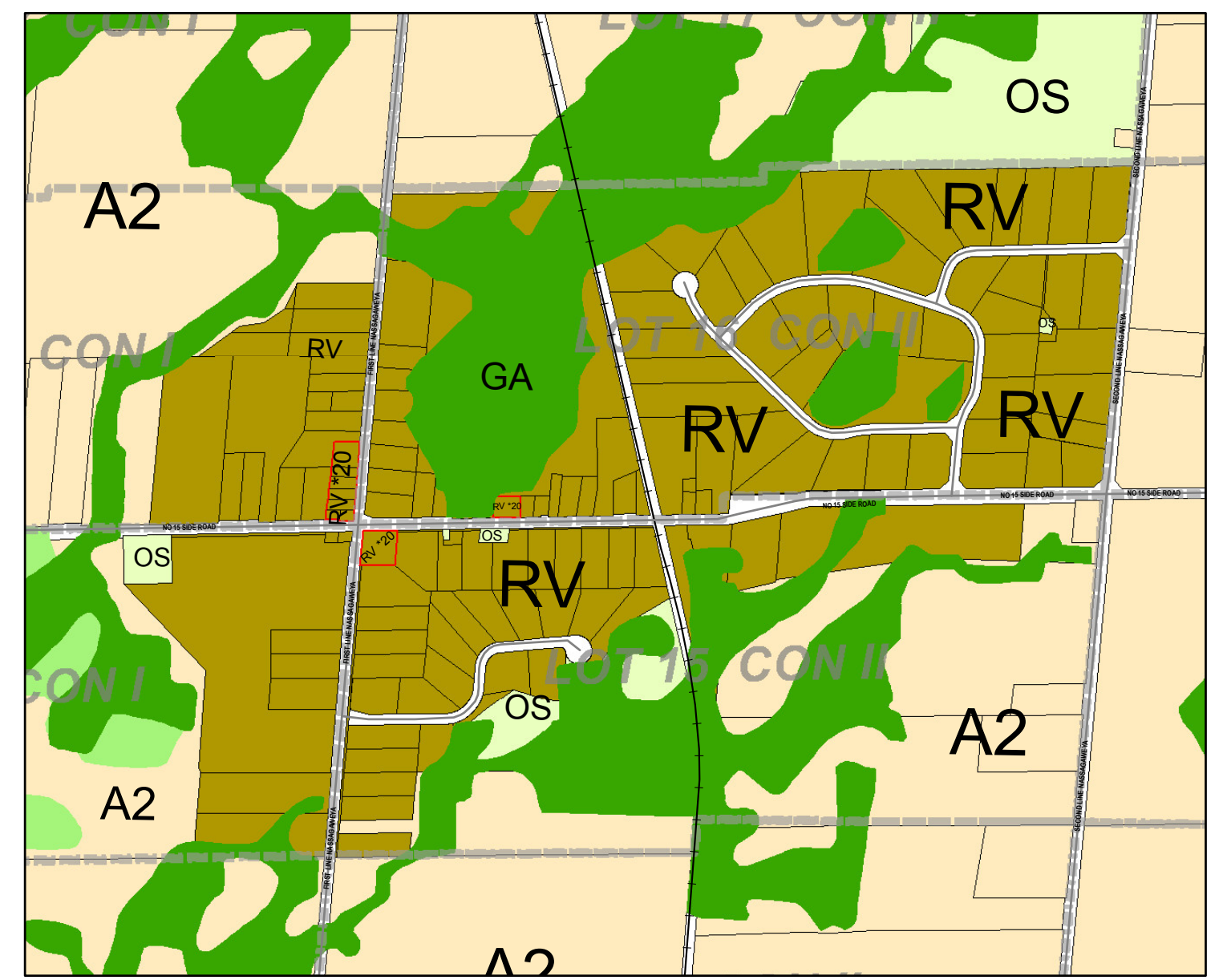
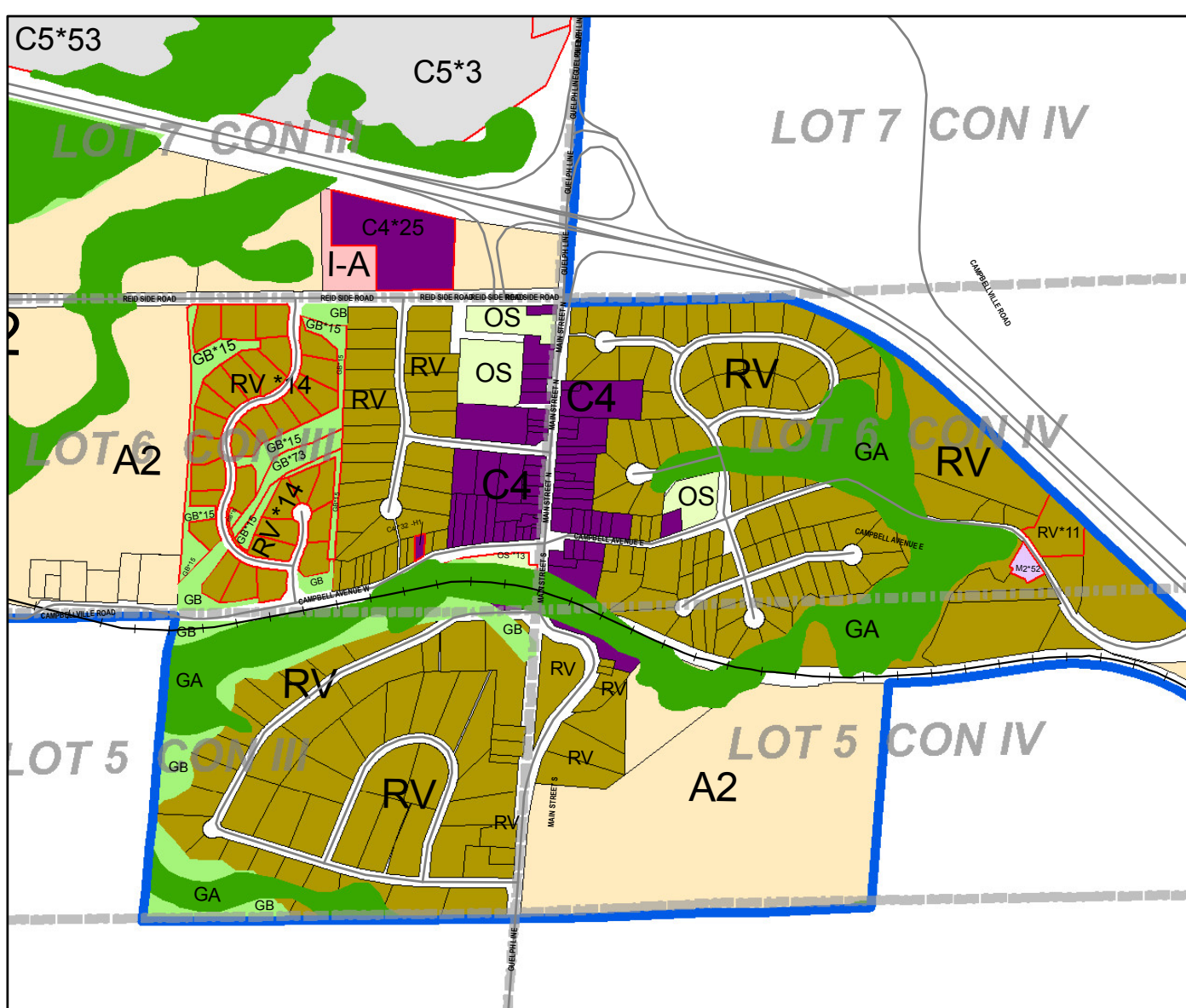


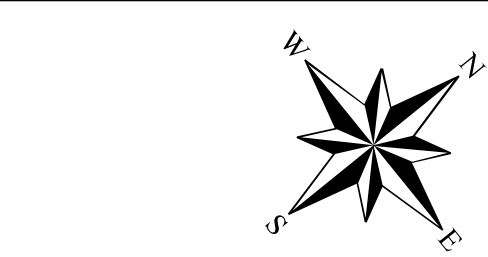
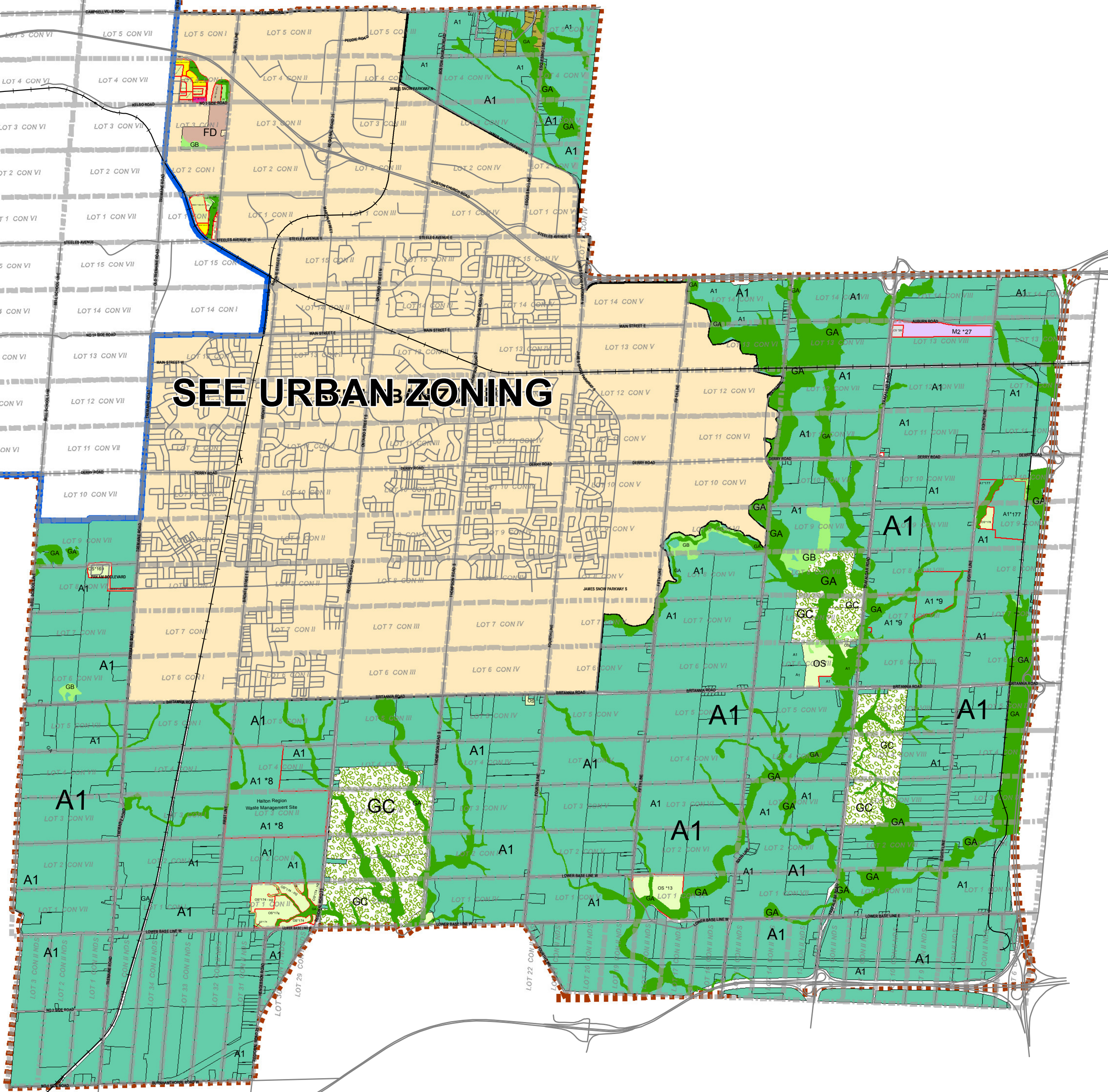
**BROOKVILLE**



**MOFFAT**



**CAMPBELLVILLE**



Projection: UTM Zone 17 NAD83

RLD	RE	C1-D	C4	M2	A2	GC
RMD1	RV	C1-E	C5	MX	GA	FD
RMD2	C1-A	C1-F	C6	I-A	GB	Under Appeal
RHD	C1-B	C2	EMP	I-B	OS	Niagara Escarpment Development Control Area
RO	C1-C	C3	M1	A1	VP	Site Specific Zone
						Special Provisions, Holding Provisions, Temporary Use Zones, and Interim Control Zones

NOTE: The following map sheets provide a representation of Schedule "A" to By-law 144-2003 and have been produced for the convenience of the reader. While efforts are made to ensure that these map sheets are up to date, in order to ensure accuracy, official zoning information should always be confirmed with the Town's Zoning Officer.

Further, these maps should be read in conjunction with the document "The Town of Milton Comprehensive Zoning By-law 144-2003, as amended from time to time."

**January 2018**

Copyright 2018: Town of Milton, Teranet Inc.